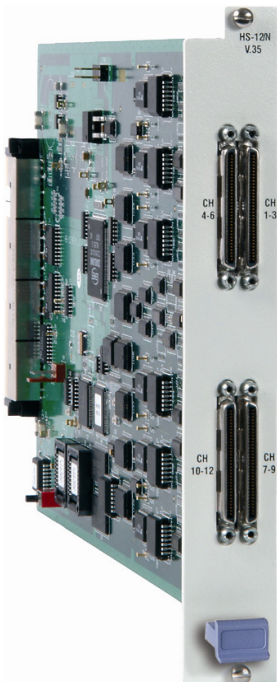


Megaplex-4100/2100/2104

HS-6N, HS-12N

6/12-Channel High-Speed Data Modules



- Programmable channel data rates in any multiple of 56 or 64 kbps (up to 1,984 kbps)
- V.24/RS-232, V.35 or V.11/RS-422 interface
- DCE, External-DCE or DTE clock modes
- Enhanced diagnostics including local and remote loopbacks on each channel
- For any I/O slot of Megaplex-2100, Megaplex-2104 or Megaplex 4100

The HS-6N and HS-12N modules support 6 and 12 high-speed synchronous data channels, respectively. All channels can be ordered with either V.24/RS-232, V.35 or V.11/RS-422 interface (electrical). The V.11/RS-422 option is used for RS-530, V.36/RS-449, or X.21 interface (physical) operation.

Each channel operates at data rates of $n \times 56$ or $n \times 64$ kbps (where $n = 1$ to 24 for T1 link, and 1 to 31 for E1 link). Data rates are independently selectable for each channel.

Note: In modules with V.24/RS-232 interface, all channels operate at 56 kbps or 64 kbps only.

The HS-6N and HS-12N modules have a maximum user payload capacity of 6 x 1984 kbps for MP-4100 and 4 x 1984 kbps for MP-2100/2104.

Each channel can be configured to operate in either DCE, External-DCE, or DTE timing modes. External-DCE mode is used in tail-end applications. Connection to nationally supplied digital lines (such as DDS or Kilostream) is supported, with the external clock available as the system timing source.

6 or 12 high-speed synchronous data channels



data communications

The Access Company

HS-6N, HS-12N

6/12-Channel High-Speed Data Modules

HS-6N and HS-12N provide bidirectional broadcast for daisy chain and ring topologies.

A comprehensive self-test initiated upon power-on and extensive diagnostics reduce downtime to a minimum. Both local and remote loopbacks and BERTs can be run on each channel.

Channel data rates and all other operating parameters of HS-6N and HS-12N are soft-selectable through the Management System.

Each group of three data channels terminates on a separate 68-pin SCSI connector. A conversion cable is available to split each 68-pin SCSI connector into three separate channel interfaces with standard V.35, V.36/RS-449, RS-530 or X.21 connectors. These cables are ordered separately (see *Ordering*).

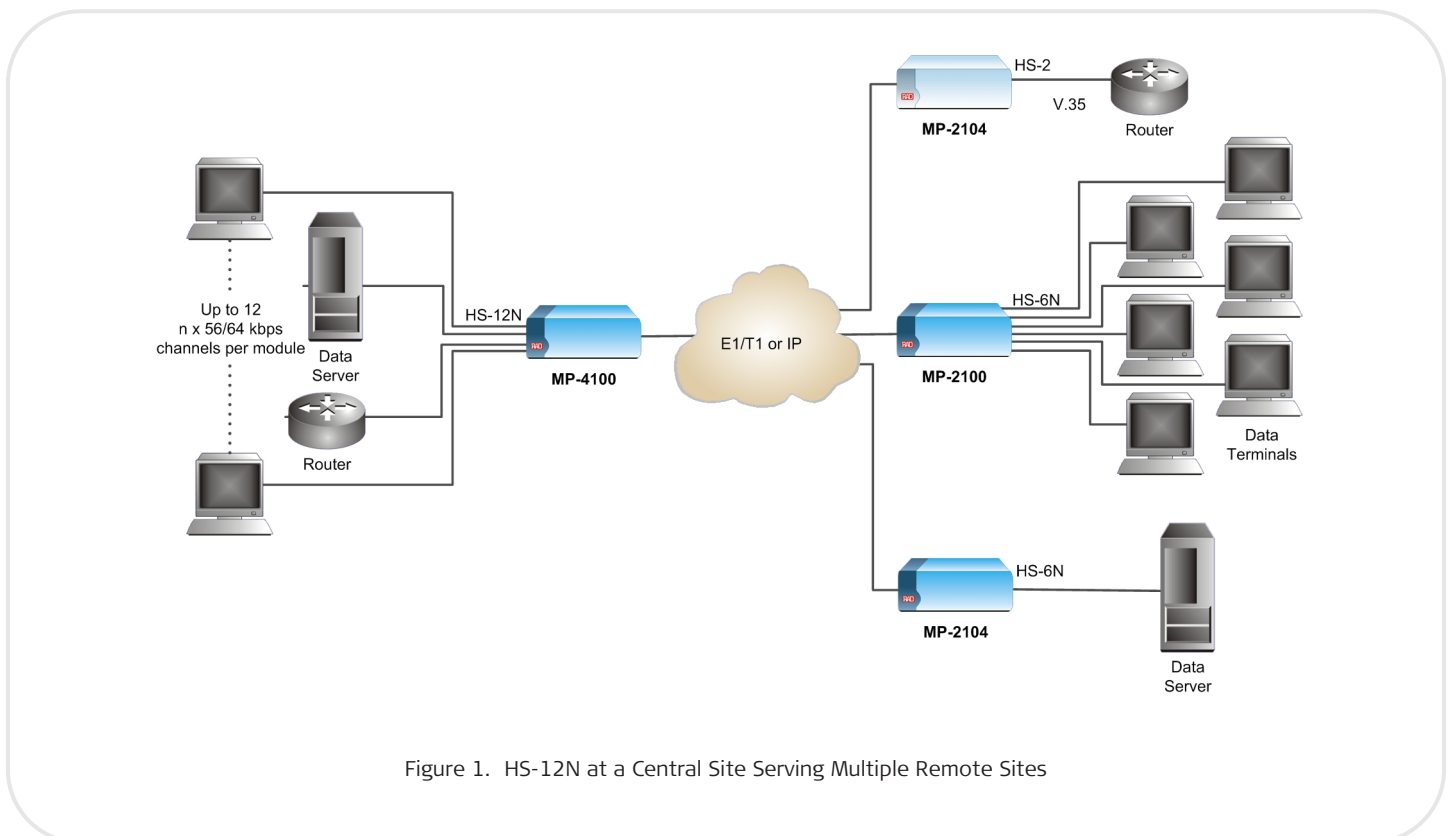


Figure 1. HS-12N at a Central Site Serving Multiple Remote Sites

Specifications

Data Channels per Module

HS-6N: 6

HS-12N: 12

Interface (Electrical)

V.24/RS-232, V.35 or V.11/RS-422

Interface (Physical)

V.24/RS-232, V.35, V.36/RS-449, RS-530, or X.21 (via conversion cables)

Connectors

Four/two 68-pin SCSI, female
(one per 3 data channels)

Clock Modes

DCE: HS channel provides both RX and TX clocks to the user DTE.

External-DCE: HS channel provides RX clock to user while receiving TX clock from user. Used for tail-end applications.

DTE: HS channel receives both RX and TX clocks from the user DCE.

Control Signals

CTS follows RTS or is constantly On, soft-selectable (same setting for all channels)

DCD constantly On, except during sync loss, or when channel is engaged in remote loopback or BERT

DSR always On

Diagnostics (per Channel)

Local loopback

Remote loopback

BERT (one channel at a time)

Power Consumption (max.)

HS-6N: 5.5W (1.1A of +5V)

HS-12N: 6.25W (1.25A of +5V)

Configuration

Programmable via Megaplex management system

Environment

Operating temperature: -10°C to 55°C
(14°F to 131°F)

Storage temperature: -20°C to 70°C
(-4°F to 158°F)

Humidity: up to 95%, non-condensing

HS-6N, HS-12N

6/12-Channel High-Speed Data Modules

Ordering

- MP-2100M- HS-6N/232
- MP-2100M- HS-6N/V35
- MP-2100M- HS-6N/422
- MP-2100M- HS-12N/232
- MP-2100M- HS-12N/V35
- MP-2100M- HS-12N/422

Legend

Interface:

- 232** V.24/RS-232
- V35** V.35
- 422** V.11/RS-422 (for V.36/RS-449, RS-530 or X.21)

OPTIONAL ACCESSORIES

CBL-SCS68/3/*/#/⊗








Cable for converting each of the HS-6N/12N's 68-pin SCSI connectors into 3 separate channel connectors with the physical interface specified.

Note: A separate cable is required for each of the four HS-12N/two HS-6N channel connectors.

Legend

- * Interface:
 - 232** V.24/RS-232, 25-pin
 - V35** V.35 interface, 34-pin
 - V36** V.36/RS-449, 37-pin
 - 530** RS-530, 25-pin
 - X21** X.21, 15-pin
- # Length (Default=2m / 6.5 ft):
 - 3M** for 3m (9.8 ft)
 - 5M** for 5m (16.4 ft)
- ⊗ Connector:
 - F** female
 - M** male

Megaplex High-Speed Modules

	HS-2	HS-Q/N	HS-6N/ HS-12N	HS-U/HS-U-6/ HS-U-12	HS-703	HS-S	HSF-1/HSF-2
Feature							
Interface Type	V.24/RS-232, V.35, X.21 or V.11/RS-422	V.24/RS-232, V.35, X.21 or V.11/RS-422	V.24/RS-232, V.35, X.21 or V.11/RS-422	ISDN "U"	G.703	ISDN "S"	IEEE C37.94 Fiber optic
Number of Channels	2	4	6/12	4/6/12	4	4	1/2
Number of Connectors	2	4	2/4	4	4	4	1/2
Data Rate	n x 64 kbps n x 56 kbps	n x 64 kbps n x 56 kbps	n x 64 kbps	128 kbps	64 kbps	128 kbps	up to 10 x 64 kbps
Supported by MP-4100	-	-	✓	HS-U-6 HS-U-12	✓	✓	HSF-2

International Headquarters
 24 Raoul Wallenberg Street
 Tel Aviv 69719, Israel
 Tel. 972-3-6458181
 Fax 972-3-6498250, 6474436
 E-mail market@rad.com

North America Headquarters
 900 Corporate Drive
 Mahwah, NJ 07430, USA
 Tel. 201-5291100
 Toll free 1-800-4447234
 Fax 201-5295777
 E-mail market@radusa.com

www.rad.com

Order this publication by Catalog No. 803688



data communications
 The Access Company