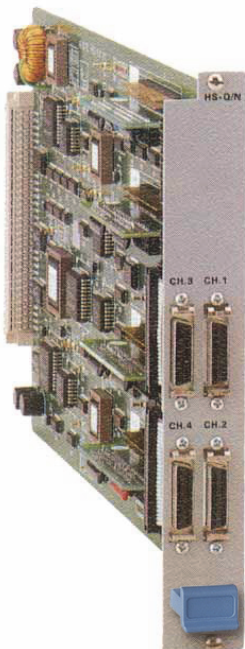


HS-Q/N

4-Channel High-Speed Data Module



- Programmable data rates up to 1,984 kbps in any multiple of 64 or 56 kbps
- Channels can be directed to any main link
- User-selectable V.35 or V.11/RS-422 interface for each channel
- DCE, EXT-DCE or DTE clock modes
- For any I/O slot of Megaplex-2100/2104

The HS-Q/N module features four high-speed synchronous data channels. Each channel is independently set by the user to either V.35 or V.11/RS-422 interface (electrical). The V.11/RS-422 selection provides RS-530, V.36/RS-449, or X.21 interface (physical) operation, via adaptor cables.

Each channel operates at data rates of $n \times 56$ or $n \times 64$ kbps (where $n = 1$ to 24 for T1 link, and 1 to 31 for E1 link). The total capacity of each pair of channels (ch1&2 and ch3&4) is 1536 kbps for T1 links and 1984 kbps for E1 links.

In dual-link applications, each pair of HS-Q/N channels can be independently connected to either of two main links. This enables routing the channels of a single HS-Q/N module to different remote sites.

Four high-speed
synchronous data
channels



data communications

The Access Company

HS-Q/N

4-Channel High-Speed Data Module

Each channel can be independently configured to operate in either DCE, External-DCE or DTE timing modes. External-DCE mode is for tail-end applications. Interface DCE/DTE type is jumper set, per channel.

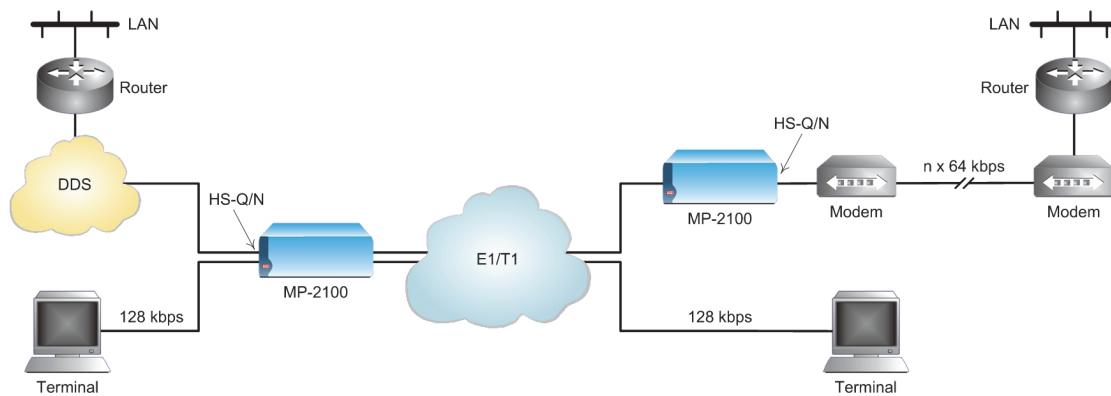
A comprehensive self-test initiated upon power-on and extensive diagnostics reduce downtime to a minimum. The internal BERT recognizes several different patterns.

To facilitate diagnostics, remote loopbacks on remote units can be activated by transmitting an FT1 inband loop code. This feature activates the loopback directly from the local site.

Each HS-Q/N channel terminates in a separate 26-pin SCSI connector. Different adaptor cables are offered by RAD to convert from the SCSI connector to a standard V.35, V.36/RS-449, RS-530 or X.21 interface.

Cables are ordered separately per channel (each channel can be independently converted to a different interface).

Channel data rates and all other operating parameters of HS-Q/N are user-selectable through the Megaplex management system.



High Speed n x 64 kbps Connection over a TDM Network

Specifications

Number of Data Channels

4

Connectors

26-pin SCSI, female (one for each channel)

Data Rate per Channel

Synchronous, $n \times 56$ or $n \times 64$ kbps, where: for T1: $n=1$ to 24, for E1: $n=1$ to 31

Interface (Electrical)

User-selectable for each channel: V.35 or V.11/RS-422

Interface (Physical)

V.35, V.36/RS-449, RS-530, or X.21 (via conversion cables)

Clock Modes

DCE: HS-Q/N channel provides both RX and TX clocks to the user DTE
 External DCE (DTE1, used for tail-end applications): HS-Q/N channel provides RX clock to the user while receiving TX clock from the user
 DTE (DTE2): HS-Q/N channel receives both RX and TX clocks from the user DCE

Control Signals

CTS follows RTS or is constantly ON, soft-selectable

DCD constantly ON, unless in RED ALARM (one DCD signal for all four channels)

Note: RTS is not available with V.11/RS-422 interface.

Diagnostics (per channel)

Local loopback
 Remote loopback
 Interruptive test
 Uninterruptive monitor
 Internal BERT (different patterns available)

Configuration

Programmable via the Megaplex management system








Power Consumption

3W

Environment

Operating temperature: -10°C to 55°C (0°F to 131°F)
 Storage temperature: -20°C to 70°C (-4°F to 158°F)
 Humidity: up to 95%, non-condensing

Megaplex High-Speed Modules

	HS-2	HS-Q/N	HS-6N/ HS-12N	HS-U/HS-U-6/ HS-U-12	HS-703	HS-S	HSF-1/HSF-2
Feature							
Interface	V.24/RS-232, V.35, X.21 or V.11/RS-422	V.24/RS-232, V.35, X.21 or V.11/RS-422	V.24/RS-232, V.35, X.21 or V.11/RS-422	ISDN "U"	G.703	ISDN "S"	IEEE C37.94 Fiber optic
Number of Channels	2	4	6/12	4/6/12	4	4	1/2
Number of Connectors	2	4	2/4	4	4	4	1/2
Data Rate	$n \times 64$ kbps $n \times 56$ kbps	$n \times 64$ kbps $n \times 56$ kbps	$n \times 64$ kbps	128 kbps	64 kbps	128 kbps	up to 10x64 kbps
Supported by MP-4100	-	-	✓	HS-U-6 HS-U-12	✓	✓	HSF-2

HS-Q/N

4-Channel High-Speed Data Module

Ordering

MP-2100M-HS-Q/N

OPTIONAL ACCESSORIES

CBL-SCS26/*/#

Adapter cable for converting the HS-Q/N module 26-pin SCSI connectors to a specified user equipment connector (a separate cable is required for each channel). Each cable is 2m (6 ft) in length.

Legend

* Interface:

V35 V.35 interface, 34-pin

V36 V.36/RS-449 interface, 37-pin

530 RS-530 interface, 25-pin

X21 X.21 interface, 15-pin

Connector:

F female

M male

International Headquarters

24 Raoul Wallenberg Street
Tel Aviv 69719, Israel
Tel. 972-3-6458181
Fax 972-3-6498250, 6474436
E-mail market@rad.com

North America Headquarters

900 Corporate Drive
Mahwah, NJ 07430, USA
Tel. 201-5291100
Toll free 1-800-4447234
Fax 201-5295777
E-mail market@rad.com

www.rad.com

Order this publication by Catalog No. 803184



data communications

The Access Company